

Content

Laboratory Equipment

Grinding Equipment

Grinder

Sample Preparation/ Digestion Equipment

Hotplate

Digestion Furnace

Digestion Furnace Accessory

Mixing/ Dispersion Equipment

Shaker

Shaker Accessory

Mixer

Mixer Accessory

Magnetic Stirrer

Magnetic Stirrer Accessory

Overhead Stirrer

Overhead Stirrer Accessory

Homogenizer

Homogenizer Accessory

Separation Equipment

Micro Centrifuge

Micro Centrifuge Accessory

High Speed Desktop Centrifuge

High Speed Desktop Centrifuge Accessory

Purification Equipment

Rotary Evaporator

Rotary Evaporator

Pump

Rotary Vane Vacuum Pump

Circulating Water Pump

Oil-free Vacuum Pump

Liquid Handling Device

Mechanical Single Channel Pipette (Adjustable)

Stepper

Mechanical Single Channel Pipette (Fixed)

Mechanical Multi-Channel Pipette

Autoclavable Pipette (Adjustable & Fixed)

Bottle-Top Dispenser

Pipette Controller

Liquid Handling Device Accessory

Liquid Handling Consumable Parts

Gas Generator

Air generator

Hydrogen Generator

Nitrogen Generator

Hydrogen-Nitrogen-Air Generator

Gas Purifying Equipment

Washing and sterilizing equipment

Autoclave

Ultrasonic Cleaner

Water Bath / Heating/Drying Equipment

Water Bath

Drying Oven

Muffle furnace/Resistance furnace

Other Equipment

Microbiological Device

Pressure Blowing Concentrator

Solvent Filtration Apparatus

Solvent Filtration Apparatus Accessory

Solid-Phase Extraction

Kjeldahl Apparatus

Abbe refractometer/ Polarimeter

Conductivity meter / pH meter

Portable On-site Sample Pretreatment Module

Portable Food Safety On-site Sample Pretreatment Module

Disintegrator module

Measurement module

Ultrasonic module

Heating module

Distill module

Vortex module

Extraction module

Centrifuge module

Arsenic hydride measurement module

Sulfureted hydrogen measurement module

Titration module

Honey moisture analysis module

Module Box

Portable Water Analysis On-site Sample Pretreatment Module

Conductivity measurement module

Water auxiliary module

Temperature control module

Optical fiber module

Portable Soil & Fertilizer On-site Sample Pretreatment Module

Soil sampling module

Universal module

Available boron module

Basic module

Stirring module

Filter module

Ambient extraction module

Heating extraction module

Φ16 colorimetric tube module

Φ25 colorimetric tube module

Constant volume module

Condensation module

Constant temperature module

Portable Colloidal Gold Product On-site Sample Pretreatment Module

Pretreatment module

Heating and dry module

On-site Fast Detection Guide

Food

Water

Soil & Fertilizer

Laboratory Equipment

Grinding Equipment

Grinder

Introduction

The grinder is used to smash the large-sized solid original material to the required size material. The grinder is formed by coarse grinder, secondary grinder and pneumatic conveyor. Grinding process is reached through high speed of impact.

Areas of application : Mining, building materials, food, pharmaceutical analysis and so on.



Ordering Information

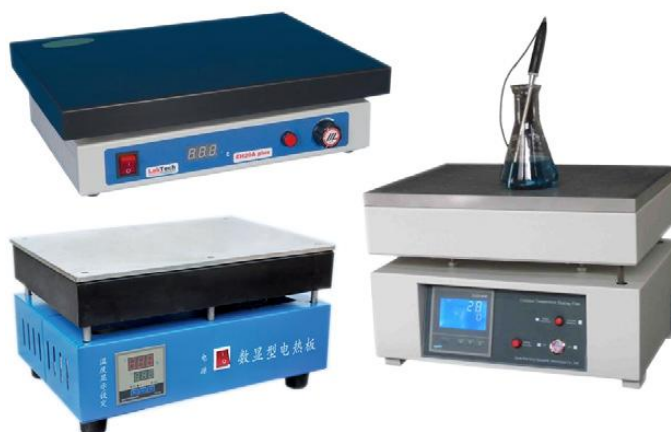
Part #	Model	Name	Specification
H3106-FW-177	FW-177	Grinder	Capacity of chamber 400 g Diameter of chamber ϕ 177mm Rational speed 24000 r/min Grinding result 60-200 mesh Motor power 1.2 kW Rated voltage 220 V Dimensions 200*240*430mm
H3104-FW-100	FW-100	Grinder	Capacity of chamber 100 g Diameter of chamber ϕ 100mm Rational speed 24000 r/min Grinding result 60-200 mesh Motor power 0.46 kW Rated voltage 220 V Dimensions ϕ 140*290 mm

Sample Preparation/ Digestion Equipment

Hotplate

Introduction

Hotplate can be widely used in agricultural products analysis, soil analysis, environmental protection, hydrological test, universities, mining enterprises, research institutes and other industries. It is a good helper for sample digestion, boil, acid evaporation, **constant temperature**, baking processes .The hotplate can be used to heat of reagent for the chemical laboratory in physics, chemistry biology, environment, pharmacy, food, beverages, teaching, research and other industries.



Ordering Information

Part #	Model	Name	Specification
H1003-DRB07-600A	DRB07-600A	Hotplate	Working dimensions 600X400 Input power : 4KW
H1003-DRB07-400B	DRB07-400B	Hotplate	Working dimensions 400X300 Input power : 3KW

Digestion Furnace 消解炉

Introduction

Digestion furnace is the auxiliary product of Kjeldahl Analyzer. It is used for the sample pretreatment of COD, total phosphorus, total nitrogen, and total organic carbon. The digestion furnace is an ideal digestion device for grain, feed, food, soil, fertilizer, bio-engineering samples.



Ordering Information

Part #	Model	Name	Specification
H1801-SPT20	SPT20	Digestion furnace	Maximum temperature 650°C

Digestion Furnace Accessory

Ordering Information

Part #	Model	Name
H1801-SPA-1	SPA-1	Waste-gas absorption device
H1801-SPE20	SPE20	Waste-gas exhaust device
H1801-SPE20	SPE20	Sample holder

Mixing/ Dispersion Equipment

Shaker

Introduction

Shaker is a versatile device used in chemistry and biology laboratories to stir liquids. It is essential for precise culture preparation of plant, biology, microbiology, Genetic, viral, environmental protection, medical and other scientific research, education and manufacturing sectors.



Ordering Information

Part #	Model	Name	Specification
H0506-SHZ-C	SHZ-C	Water bath shaker	Temp. Range: RT+5 ~ 99.9°C Rotate Mode: Reciprocating Rotation Rate: 0 ~ 300 rpm Vibration Amplitude: 30mm Tray Size: 380mm×300mm Power: 1600W
H0506-SHZ-B	SHZ-B	Water bath shaker	Temp. Range: RT+5 ~ 99.9°C Rotate Mode: Orbital & Reciprocating Rotation Rate: 0 ~ 220 rpm (Orbital) 0 ~ 300 rpm (Reciprocating) Vibration Amplitude: 20mm (Orbital) 30mm (Reciprocating) Tray Size: 380mm×300mm Power: 1600W
H3403-83101001	SK-L180-Pro	LCD Linear Shaker	Mode : Linear Rotation Rate 100-350rpm
H3403-83101002	SK-L330-Pro	LCD Linear Shaker	Mode : Linear Rotation Rate 100-350rpm
H3403-83201001	SK-O180-Pro	LCD Orbital Shaker	Mode : Orbital Rotation Rate 100-800rpm
H3403-83201001	SK-O330-Pro	LCD Orbital Shaker	Mode : Orbital Rotation Rate 100-500rpm
H3403-83201001	SK-R330-Pro	LCD Digital Rocking Shaker	Rotation Rate 10-70rpm
H3403-83422011	SK-D3309-Pro	LCD Digital 3D Shaker	Rotation Rate 10-70rpm

Shaker Accessory

Ordering Information

Part #	Model	Name	Specification
H3403-18900040	SK330.3	Longitudinal clamp	Suitable for a variety of containers
H3403-18900038	SK180.3	Longitudinal clamp	Suitable for a variety of containers
H3403-18900027	SK330.1	Universal clamp	Suitable for a variety of containers
H3403-18900025	SK180.1	Universal clamp	Suitable for a variety of containers
H3403-18900155	SK330.5	Culture dish holder set	Universal 330 culture dish
H3403-18900039	SK180.4	Culture dish holder	With rubber gasket
H3403-18900028	SK330.2	Blank pinboard	Support the use of beaker flask clamp
H3403-18900026	SK180.2	Blank pinboard	Support the use of beaker flask clamp
H3403-18900036		Black rod (for fixing container)	Used with SK330.1
H3403-18900037		Black rod (for fixing container)	Used with SK180
H3403-18900030	SK180.2.2	Beaker Flask clamp	50ml, Support the use of blank pinboard
H3403-18900033	SK180.2.5	Beaker Flask clamp	500ml, Support the use of blank pinboard
H3403-18900029	SK180.2.1	Beaker Flask clamp	25ml, Support the use of blank pinboard
H3403-18900032	SK180.2.4	Beaker Flask clamp	200/250ml, Support the use of blank pinboard
H3403-18900031	SK180.2.3	Beaker Flask clamp	100ml, Support the use of blank pinboard

Mixer

Introduction

Mixer can well mix the sample in micro tube during the procedure of sample pretreatment and sample preparation. The rotation speed and angle are adjustable. Mixer is widely used for the mixing, stirring and oscillation of sample tissues, cells, bacteria, and chemical reagents, in the field of life sciences, physical and chemical analysis.



Ordering Information

Part #	Model	Name	Specification
H0906-XW-80A	XW-80A	Vortex mixer	Mix mode : powder, liquid Vibrating mix Mix frequency: f=2800rpm Dimensions: Φ140×140mm
H3403-82110001	MX-F	Vortex Mixer	Speed: fixed, 2500 rpm, continuous or inching running modes
H3403-82120001	MX-S	Vortex Mixer	Speed range : 0-2500 rpm, continuous or inching running modes
H3403-82220001	MX-M	Microplate Mixer	Mode : Orbital Speed range: single microplate: 0-1500rpm , double microplate: 0-1000rpm
H3403-82321011	MX-T6-S	Tube Roller Mixer	Speed range: 0-70 rpm
H3403-82422211	MX-RL-Pro	LCD Digital Mixer	Speed range: 10-70 rpm
H3403-82423211	MX-RD-Pro	Class Mixer	Speed range: 10-70 rpm

Mixer Accessory

Ordering Information

Part #	Model	Name	Specification
H3401-18900044	VT1.2	Tube adapters	
H3401-18900024	VT1.3.5	Tube adapters	
H3401-18900023	VT1.3.4	Tube adapters	
H3401-18900022	VT1.3.3	Tube adapters	
H3401-18900021	VT1.3.2	Tube adapters	
H3401-18900020	VT1.3.1	Tube adapters	
H3402-18900160		Disc centrifuge tube clamp	1.5ml×60
H3402-18900161		Disc centrifuge tube clamp	15ml×16
H3402-18900162		Disc centrifuge tube clamp	50ml×8
H3402-18900142		Centrifuge tube clamp	1.5ml×48
H3402-18900143		Centrifuge tube clamp	15ml×24
H3402-18900144		Centrifuge tube clamp	50ml×24
H3402-18900145		Centrifuge tube clamp	1.5ml×32
H3402-18900146		Centrifuge tube clamp	15ml×16
H3402-18900147		Centrifuge tube clamp	50ml×16
H3403-18900140	MX-RD-Pro	Connecting rod of disc layer	
H3403-18900158	VT1.3.7	Rubber vacuum suction feet	

H3403-18900079	MXM-116	Double microplate tray	
H3403-18900043	VT1.3.6	Plate pad	
H3403-18900042	PS1.2	Microplate tray	
H3403-18900067	PS1.1	Universal round head for microplate mixer	
H3403-18100990	VT1.1	Standard head	
H3403-18900035		Round plate holder	100mm

Magnetic stirrer

Introduction

Magnetic stirrer, which is designed by the magnetic and vortex principle, is suitable to be used for the mixture or mixture and heating at the same time of low viscosity liquid and solid-liquid mixture. After putting the liquid and stir bar into the container, the magnetic field that generated from the base will lead the stir bar to move in circle and achieve the purpose of mixture. Along with the temperature control device, the magnetic stirrer can easily achieve and maintain the temperature required by the user and greatly enhances experiment repeatability.



Ordering Information

Part #	Model	Name	Specification
H3107-SH-2	SH-2	Magnetic stirrer	Motor power: 10w Stirring speed: 0-1600rpm
H3403-81111111	MS-S	Magnetic stirrer	Bluespin Classic Magnetic Stirrer Stirring points quantity: 1 Max. stirring quantity (H2O): 20L Speed range : 0-1500 rpm
H3403-81112101	MS-H-S	Magnetic stirrer	Bluespin Classic Magnetic Hotplate Stirrer Stirring points quantity: 1 Max. stirring quantity (H2O): 20L

			Speed range : 0-1500 rpm Max. heating temperature: 340°C
H3403-81131101	MS-M-S10	Magnetic stirrer	10-Channel Classic Magnetic Stirrer Stirring points quantity: 10 Max. stirring quantity (H2O): 0.4L/point Speed range : 0-1100 rpm
H3403-81132101	MS-H-S10	Magnetic stirrer	10-Channel Classic Magnetic Hotplate Stirrer Stirring points quantity: 10 Max. stirring quantity (H2O): 0.4L/point Speed range : 0-1100 rpm Max. heating temperature: 120°C
H3403-81321301	MS7-H550-Pro	Magnetic stirrer	LCD Digital Magnetic Hotplate Stirrer 7 inch square hotplate Stirring points quantity: 1 Max. stirring quantity (H2O): 20L Speed range : 100-1500 rpm Max. heating temperature: 550°C
H3403-81322101	MS7-H550-S	Magnetic stirrer	LED Digital Magnetic Hotplate Stirrer 7 inch square hotplate Stirring points quantity: 1 Max. stirring quantity (H2O): 10L Speed range : 0-1500 rpm Max. heating temperature: 550°C

Magnetic stirrer Accessory

Ordering Information

Part #	Model	Name	Specification
H3403-18900014	MSBAR80	Magnetic stir bar	Permanent magnet with temperature under 150°C (80×13mm) , 1
H3403-18900013	MSBAR65	Magnetic stir bar	Permanent magnet with temperature under 50°C (65×8mm) , 1
H3403-12500004	MSBAR50	Magnetic stir bar	Permanent magnet with temperature under 150°C (50×8mm) , 1
H3403-18900011	MSBAR40	Magnetic stir bar	Permanent magnet with temperature under 150°C (40×8mm) , 1
H3403-12500005	MSBAR30	Magnetic stir bar	Permanent magnet with temperature under 150°C (30×6mm) , 1
H3403-18900009	MSBAR25	Magnetic stir bar	Permanent magnet with temperature under 150°C (25×8mm) , 1
H3403-18900008	MSBAR20	Magnetic stir bar	Permanent magnet with temperature under 150°C (20×8mm) , 1
H3403-18900007	MSBAR15	Magnetic stir bar	Permanent magnet with temperature under 150°C (15×8mm) , 1
H3403-18900006	MSBAR10	Magnetic stir bar	Permanent magnet with temperature under 150°C (10×6mm) , 1

H3403-18900015	MARRM	Magnetic stir bar extractor	20cm , 1
H3403-18900003	MS135.3	Reaction tube	Purple 1/4 circle , 20ml , used with MS135.1 and MS135.8 4 holes , hole diameter: Ø28mm, depth : 24mm
H3403-18900065	MS135.8	Loading ring	Independently use or used with 135.2-7
H3403-18900001	MS135.1	Loading plate	Independently use or used with 135.2-7
H3403-18900017	MSPS01	Temperature probe holder	Suitable for PT1000
H3403-18900084	PT1000-C	External temperature probe	Length 100mm
H3403-18900016	PT1000-A	External temperature probe	Length 230mm
H3403-18900048	MS135.6	Green reaction tube	Green 1/4 circle , 20ml , used with MS135.1 and MS135.8 4 holes , hole diameter: Ø28mm, depth : 24mm
H3403-18900004	MS135.4	Blue reaction tube	Blue 1/4 circle , 20ml , used with MS135.1 and MS135.8 4 holes , hole diameter: Ø28mm, depth : 24mm
H3403-18900049	MS135.7	Golden reaction tube	Golden 1/4 circle , 20ml , used with MS135.1 and MS135.8 4 holes , hole diameter: Ø28mm, depth : 24mm
H3403-18900002	MS135.2	Red reaction tube	Red 1/4 circle , 20ml , used with MS135.1 and MS135.8 4 holes , hole diameter: Ø28mm, depth : 24mm
H3403-18900005	MS135.5	Black reaction tube	Black 1/4 circle , 20ml , used with MS135.1 and MS135.8 4 holes , hole diameter: Ø28mm, depth : 24mm
H3403-18900136	PT1000-B	Temperature probe with glass cover	Glass cover, length 230mm
H3403-18900019	F101	Silicone protective cover	Suitable for MS-H-Pro+和 MS-H-S (temperature≤ 135°C)
H3403-18900018	F100	Silicone protective cover	Suitable for MS-S
H3403-18101006		Heating block for round-bottom flask	50ml
H3403-18101009		Heating block for round-bottom flask	500ml
H3403-18101008		Heating block for round-bottom flask	250ml
H3403-18101007		Heating block for round-bottom flask	100ml

Overhead stirrer

Introduction

Overhead stirrer is suitable for mixture of high viscosity liquid or solid-liquid sample. It is widely used in chemical synthesis, pharmaceutical, physical and chemical analysis, petrochemical, cosmetics, health care, food, biotechnology and other fields. The speed and torque data can be saved continuously with standard configuration, and the viscosity change in reaction process can be observed.



Ordering Information

Part #	Model	Name	Specification
H3403-84020211	OS40-S	Overhead stirrer	LED display Max.torque: 60Ncm Max. viscosity: 50000mPas
H3403-84010211	OS20-S	Overhead stirrer	LED display Max.torque: 40Ncm Max. viscosity: 10000mPas
H3403-84010311	OS20-Pro	Overhead stirrer	LCD display Max.torque: 40Ncm Max. viscosity: 10000mPas RS232 Interface
H3403-84020311	OS40-Pro	Overhead stirrer	LCD display Max.torque: 60Ncm Max. viscosity: 50000mPas RS232 Interface
H3403-OS20-Pro	OS20-Pro	Overhead stirrer standard set	Max.torque: 40Ncm Max. viscosity: 10000mPas RS232 Interface
H3403-OS20-S	OS20-S	Overhead stirrer standard set	Max.torque: 40Ncm Max. viscosity: 10000mPas
H3403-OS40-Pro	OS40-Pro	Overhead stirrer standard set	Max.torque: 60Ncm Max. viscosity: 50000mPas

			RS232 Interface
H3403-OS40-S	OS40-S	Overhead stirrer standard set	Max.torque: 60Ncm Max. viscosity: 50000mPas

Overhead stirrer Accessory

Ordering Information

Part #	Model	Specification
H3403-18900072	Straight agitator	Length 40cm ; Max.diameter 6cm ; 316L stainless steel
H3403-18900076	Straight agitator	Length 35cm ; Max.diameter 7cm ; Coat with PTFE
H3403-18900071	Four-bladed agitator	Length 40cm ; Max.diameter 5cm ; 316L stainless steel
H3403-18900075	Four-bladed agitator	Length 35cm ; Max.diameter 6.5cm ; Coat with PTFE
H3403-18900073	Fan blade agitator	Length 40cm ; Max.diameter 6.8cm ; 316L stainless steel
H3403-18900077	Fan blade agitator	Length 35cm ; Max.diameter 6.8cm ; Coat with PTFE
H3403-18900074	Centrifugal agitator	Length 40cm ; Max.diameter 9cm ; 316L stainless steel
H3403-18900078	Centrifugal agitator	Length 35cm ; Max.diameter 8.5cm ; Coat with PTFE
H3403-18900131	Plate holder set	Including plate base (width 200mm ; depth 315mm) , supporting rod (height 780mm) and clamp

Homogenizer

Introduction

The homogenizer is a kind of laboratory or industrial equipment used for the homogenization of various types of material (viscosity \leq 0.2Pa.s;temperature \leq 80°C). It is widely used in biomedical, petrochemical, food industry and other fields.



Ordering Information

Part #	Model	Name	Specification
H0902-DY89-II	DY89-II	Ultrasonic homogenizer	Speed : 50-2200rpm adjustable Power : 220W
H0901-SCIENTZ-09	Scientz-09	Homogenizer	Tip time: 0.1 ~ 99min (0.1min/step) or 6 ~ 5940sec Tip speed: 3 ~ 12 times/sec (0.1 times/sec) Volume: 3 ~ 400mL Sterile bag : 17×30cm
H0901-SCIENTZ-04	Scientz-04	Homogenizer	Tip time: 30,180,600 sec or continuous working Tip speed: 6 ~ 9 times/sec Volume: 3 ~ 400mL Power: 300W Motor speed: 500-1500rpm Display Mode: LCD Sterile bag : 17×30cm
H3403-85010102	D-160	Homogenizer	Integration dispersing head: 5mm Suitable for small amount of samples (solid & liquid mixing) Rotation Speed: 8000-30000rpm Sample volume: 0.1-50mL
H3403-85010202	D-160	Homogenizer	Integration dispersing head: 10mm Suitable for small amount of samples (solid & liquid mixing) Rotation Speed: 8000-30000rpm Sample volume: 1-250mL
H3403-85020102	D-500	Homogenizer	Integration dispersing head Solid & liquid mixing Rotation Speed: 10000-30000rpm Sample volume: 10-5000mL
H3403-85020202	D-500	Homogenizer	Integration dispersing head Emulsifying Rotation Speed: 10000-30000rpm Sample volume: 10-5000mL

Homogenizer Accessory

Ordering Information

Part #	Model	Name	Specification
H3402-18900124	SR30	Rotor	Suitable for D-500, 30mm standard
H3402-18900123	SR20	Rotor	Suitable for D-500, 20mm standard
H3402-18900128	MR30	Rotor	Suitable for D-500, 30mm mixing
H3402-18900127	MR20	Rotor	Suitable for D-500, 20mm mixing
H3402-18900130	ER30	Rotor	Suitable for D-500, 30mm emulsifying
H3402-18900129	ER20	Rotor	Suitable for D-500, 20mm emulsifying
H3402-18900126	CR30	Rotor	Suitable for D-500, 30mm homogeneity
H3402-18900125	CR20	Rotor	Suitable for D-500, 20mm homogeneity
H3402-18900122	S40C	Stator	Suitable for D-500, 40mm rough
H3402-18900121	S30F	Stator	Suitable for D-500, 30mm fine
H3402-18900120	S30C	Stator	Suitable for D-500, 30mm rough
H3402-18900119	S20F	Stator	Suitable for D-500, 20mm fine
H3402-18900118	S20C	Stator	Suitable for D-500, 20mm rough
H3403-18900113	DS-160/5	Integration dispersing head	Suitable for small amount of samples (solid & liquid mixing) Sample volume: 0.1-50mL
H3403-18900117	DS-500/5	Integration dispersing head	Suitable for small amount of samples (solid & liquid mixing) Sample volume: 1-50mL
H3403-18900116	DS-500/2	Integration dispersing head	Emulsify Sample volume: 10-5000mL
H3403-18900115	DS-500/1	Integration dispersing head	Solid & liquid mixing Sample volume: 10-5000mL
H3403-18900114	DS-160/10	Integration dispersing head	Suitable for small amount of samples (solid & liquid mixing) Sample volume: 1-250mL

Separation Equipment

Micro Centrifuge

Introduction

A centrifuge machine is used to separate solid-liquid sample or liquid mixture with different components by centrifugal force. The centrifuge is widely used in chemical, petroleum, food, pharmaceutical, mineral processing, coal, water treatment, and shipbuilding industries. It's quite important to fully considerate the following conditions when choosing the suitable centrifuge: the solid particle size and the concentration in the suspension (or emulsion), the density difference of solid and liquid (or two kinds of liquid), liquid viscosity, residues (or sediment) features. Micro centrifuge is a suitable device for small amount of samples.



Ordering Information

Part #	Model	Name	Specification
H3402-91013141	D1008	Palm Micro Centrifuge	Cover color: blue Fixed rotation speed: 7000rpm Max.RCF: 2680×g
H3402-91014141	D1008	Palm Micro Centrifuge	Cover color: green Fixed rotation speed: 7000rpm Max.RCF: 2680×g
H3402-91015141	D1008	Palm Micro Centrifuge	Cover color: pink Fixed rotation speed: 7000rpm Max.RCF: 2680×g
H3402-91016141	D1008	Palm Micro Centrifuge	Cover color: yellow Fixed rotation speed: 7000rpm Max.RCF: 2680×g

H3402-91111511	D2012	High Speed Mini Centrifuge	Max. rotation speed: 15000rpm Max.RCF: 15100×g
H3402-91111541	D2012 plus	High Speed Mini Centrifuge	Max. rotation speed: 15000rpm Max.RCF: 15100×g CE certification
H3402-91211512	D3024	High Speed Mini Centrifuge	Rotation Speed: 200-15000rpm Interval: 10rpm
H3402-91212552	DM1424	Hematocrit centrifuge	Rotation Speed:200-14000rpm Interval: 10rpm
H3402-91312341	DM0412	Clinical centrifuge	Rotation Speed: 300-4500rpm Interval: 100rpm
H3402-91318342	DM0412E	Clinical centrifuge	Rotation Speed: 4500rpm Continuous interval
H3402-92211512	D3024R	High Speed Refrigerated Micro Centrifuge	Rotation Speed: 200-15000rpm Interval: 10rpm

Micro Centrifuge Accessory

Ordering Information

Part #	Model	Name	Specification
H3402-19500002	A05P2	Rotor adapter	2ml to 0.5ml , suitable for A12-2,A12-2P,AS24-2 and A24-2P rotors
H3402-19500001	A02P2	Rotor adapter	2ml to 0.2ml , suitable for A12-2,A12-2P,AS24-2 and A24-2P rotors
H3402-19400009	A12-2P	Rotor set	Plastic, suitable for D2012plus, with LOGO Max. speed: 15000rpm, Max. volume: 2ml×12
H3402-19400010	A12-2P	Rotor set	Plastic, suitable for D2012plus, Max. speed: 15000rpm, Max. volume: 2ml×12
H3402-19400001	A12-2	Rotor set	Aluminum alloy, suitable for D2012, with LOGO Max. speed: 15000rpm, Max. volume: 2ml×12
H3402-19400005	A12-2	Rotor set	Aluminum alloy, suitable for D2012, Max. speed: 15000rpm, Max. volume: 2ml×12
H3402-19400028		Rotor adapter pad	Used with A10P15
H3402-19400027	A10P15	Rotor adapter	Suitable for A12-10P rotor
H3402-19500003	A02P05	Rotor adapter	Suitable for AS36-05 rotor
H3402-19400013	A24-2P	Rotor set	Plastic, suitable for DM1424, Max. speed: 14000rpm, Max. volume: 2ml×24
H3402-19400019	A24-2P	Plastic rotor set	Plastic, suitable for DM1424, with LOGO Max. speed: 14000rpm, Max. volume: 2ml×24
H3402-19200348	A12-10P	Plastic rotor	Suitable for DM0412, Max. speed: 4500rpm, Max. volume: 15ml×8
H3402-19200358	A12-10P	Plastic rotor	Suitable for DM0412E, Max. speed: 4500rpm, Max. volume: 15ml×8
H3402-19400014	AC24P	Capillary rotor set	Hematocrit rotor kit with a lid and a reading disk, Suitable for DM1424, With LOGO Max. speed: 12000rpm, Max. volume: 24 capillary tube
H3402-19400023	AC24P	Capillary rotor set	Hematocrit rotor kit with a lid and a reading disk, Suitable for DM1424, Max. speed: 12000rpm, Max. volume: 24 capillary tube
H3402-19400004	AS4	Aluminum alloy	Suitable for D3024&D3024R, With LOGO

		rotor set	Max. speed: 15000rpm, Max. volume: 4×PCR8
H3402-19400008	AS4	Aluminum alloy rotor set	Suitable for D3024&D3024R, Max. speed: 15000rpm, Max. volume: 4×PCR8
H3402-19400003	AS36-05	Aluminum alloy rotor set	Suitable for D3024&D3024R, With LOGO Max. speed: 15000rpm, Max. volume: 0.5ml×36
H3402-19400007	AS36-05	Aluminum alloy rotor set	Suitable for D3024&D3024R, Max. speed: 15000rpm, Max. volume: 0.5ml×36
H3402-19400002	AS24-2	Aluminum alloy rotor set	Suitable for D3024&D3024R, With LOGO Max. speed: 15000rpm, Max. volume: 2ml×24
H3402-19400006	AS24-2	Aluminum alloy rotor set	Suitable for D3024&D3024R, Max. speed: 15000rpm, Max. volume: 2ml×24
H3402-19400011	A18-5	Aluminum alloy rotor set	Suitable for D3024&D3024R, With LOGO Max. speed: 15000rpm, Max. volume: 5ml×18
H3402-19400012	A18-5	Aluminum alloy rotor set	Suitable for D3024&D3024R, Max. speed: 15000rpm, Max. volume: 5ml×18

High Speed Desktop Centrifuge

Introduction

A centrifuge machine is used to separate solid-liquid sample or liquid mixture with different components by centrifugal force. The centrifuge is widely used in chemical, petroleum, food, pharmaceutical, mineral processing, coal, water treatment, and shipbuilding industries. It's quite important to fully considerate the following conditions when choosing the suitable centrifuge: the solid particle size and the concentration in the suspension (or emulsion), the density difference of solid and liquid (or two kinds of liquid), liquid viscosity, residues (or sediment) features. High speed desktop centrifuge is widely used in the research, education and production departments of biological, chemical, pharmaceutical industry, also suitable for the fast separation and synthesis of trace samples.



Ordering Information

Part #	Model	Name	Specification
H0804-KA-1000	KA1000C	Centrifuge	Max. rotation speed:4000rpm Max.RCF: 2220×g Timer range: 0-99min
H0801-TGL-16G	TGL-16G	High Speed Desktop Centrifuge	Max. speed: 16500rpm Max.RCF: 18080×g Timer range: 0-99min
H0801-TGL-10B	TGL-10B	High Speed Desktop Centrifuge	Max. speed: 10000rpm Max.RCF: 8944×g Timer range: 0-99min

Micro Centrifuge Accessory

Ordering Information

Part #	Model	Name	Specification
H0802-TGL-18C1	TGL-18C1	Rotor	NO.1
H0801-TGL-10B1	TGL-10B	Rotor	NO.2
H0801-TGL-10B2	TGL-10B	Rotor	NO.2

Purification Equipment

Rotary Evaporator

Introduction

A rotary evaporator is used for the evaporation of volatile solvents in chemical laboratories (under reduced pressure), especially for the concentration of extraction liquid, distillation of collection liquid from chromatographic separation, and separation & purification of reaction products. It is widely used for the procedure of standard distillation, reflux distillation, powder drying and the recycling of chemicals medicine or solvents in laboratory and production enterprises.



Ordering Information

Part #	Model	Name	Specification
H3404-61111212	RE100-Pro	Rotary Evaporator	Speed range:20-280rpm Display: LCD Clockwise direction of rotation: Yes Temperature range: ambient ~180°C

Rotary Evaporator

Ordering Information

Part #	Model	Name	Specification
H3403-18100998		Steam tube	
H3403-18300119		Evaporating flask	500ml
H3403-18300118		Evaporating flask	250ml
H3403-18300121		Evaporating flask	2000ml
H3403-18300117		Evaporating flask	100ml
H3403-18300120		Evaporating flask	1000ml
H3403-18900165		Vertical condensation kit	Glass
H3403-18900166		Vertical condensation kit	Glass, coat with explosion-proof film
H3403-18300109		Collection flask	500ml
H3403-18300108		Collection flask	250ml
H3403-18300111		Collection flask	2000ml
H3403-18300107		Collection flask	100ml
H3403-18300110		Collection flask	1000ml
H3403-18100926		Seal washer	
H3403-18300093		Anti-explosion ball	250ml
H3403-18200746	F250	Low-temperature cooling circulator	

Pump

Rotary vane vacuum pump

Introduction

Since vacuum pump is not sensitive to dust and water vapor, it must be worked with a backing pump to achieve high pumping speed in a wide pressure range. Vacuum pump is widely used in metallurgy, chemical, food, electrical coating and other industries. Rotary vane vacuum pump is suitable as the backing pump of diffusion pump. It is quite an ideal choice for the precision instruments and laboratory. E.g. mass spectrometer, refrigerator assembly line, vacuum freeze-drying machine.



Ordering Information

Part #	Model	Name	Specification
H0505-BX-0.5	BX-0.5	Rotary vane vacuum pump	Vacuum speed: 0.5L/s Ultimate Pressure: 6×10^{-2}

Water circulating vacuum pump

Introduction

Water circulating vacuum pump was originally used as a self-priming pump, then gradually used in petroleum, chemicals, machinery, mining, light industry, medicine and food, and many other industrial sectors. It is mainly used to

provide vacuum condition and cooling water for chemical laboratory.



Ordering Information

Part #	Model	Name	Specification
H1104-SHZ-III	SHZ-III	Water circulating pump	Power: 180W Flow rate : 60L/min Pump lift: 8m Max. vacuum degree :0.098Mpa Single-head extraction volume : 10L/min

Oil-free vacuum pump

Introduction

Oil-free vacuum pump can greatly improve the efficiency of the filtration and the degassing. It can be used with solvent filter.



Ordering Information

Part #	Model	Name	Specification
H1704-AP-01P	AP-01P	Vacuum pressure pump	Pressure: ≥ 80 Kpa Flow rate : 8L/min

			Power: 50VA
H3403-18200743	CA410	Diaphragm vacuum pump	220-240V/50/60Hz

Liquid Handling Device

Mechanical Single Channel Pipette (Adjustable)

Introduction

A pipette is normally used to quantitative transport small volume of low viscosity liquid in chemistry, biology and medicine industry. The sample volume of the mechanical single pipette can be adjusted according to its range.



Ordering Information

Part #	Model	Name	Specification
H3401-71111109	TopPette	Pipette	20-200 μ l , manual adjustable
H3401-71111114	TopPette	Pipette	100-1000 μ l , manual adjustable
H3401-71111117	TopPette	Pipette	1000-1500 μ l , manual adjustable
H3401-71111133	TopPette	Pipette	2-10ml , manual adjustable
H3401-71111106	TopPette	Pipette	5-50 μ l , manual adjustable
H3401-71111105	TopPette	Pipette	2-20 μ l , manual adjustable
H3401-71111108	TopPette	Pipette	10-100 μ l , manual adjustable
H3401-71111111	TopPette	Pipette	50-200 μ l , manual adjustable
H3401-71111116	TopPette	Pipette	200-1000 μ l , manual adjustable
H3401-71211101	MicroPette	Pipette	0.1-2.5 μ l , manual adjustable
H3401-71211104	MicroPette	Pipette	5-50 μ l , manual adjustable
H3401-71211105	MicroPette	Pipette	2-20 μ l , manual adjustable
H3401-71211106	MicroPette	Pipette	5-50 μ l , manual adjustable
H3401-71211108	MicroPette	Pipette	10-100 μ l , manual adjustable

H3401-71211109	MicroPette	Pipette	20-200µl , manual adjustable
H3401-71211111	MicroPette	Pipette	50-200µl , manual adjustable
H3401-71211114	MicroPette	Pipette	100-1000µl , manual adjustable
H3401-71211116	MicroPette	Pipette	200-1000µl , manual adjustable
H3401-71211117	MicroPette	Pipette	1000-1500µl , manual adjustable
H3401-71211133	MicroPette	Pipette	2-10ml , manual adjustable

Continuous liquid dispensing pipette/ Stepper

Introduction

Stepper is a continuous liquid dispensing pipette. It is equipped with durable tip locker.



Ordering Information

Part #	Model	Name	Specification
H3401-72010000	StepMate	Stepper	Measurement range: 0.5-50ml

Fixed-Volume Pipette

Introduction

Fixed-Volume pipette is normally used to quantitative transport small volume of low viscosity liquid in chemistry, biology and medicine industry. The sample volume is fixed.



Ordering Information

Part #	Model	Name	Specification
H3401-71112118	TopPette	Pipette	5 μ l , manual fixed
H3401-71112119	TopPette	Pipette	10 μ l , manual fixed
H3401-71112120	TopPette	Pipette	20 μ l , manual fixed
H3401-71112121	TopPette	Pipette	25 μ l , manual fixed
H3401-71112122	TopPette	Pipette	50 μ l , manual fixed
H3401-71112123	TopPette	Pipette	100 μ l , manual fixed
H3401-71112124	TopPette	Pipette	200 μ l , manual fixed
H3401-71112125	TopPette	Pipette	250 μ l , manual fixed
H3401-71112126	TopPette	Pipette	500 μ l , manual fixed
H3401-71112127	TopPette	Pipette	1000 μ l , manual fixed
H3401-71112128	TopPette	Pipette	2000 μ l , manual fixed
H3401-71112129	TopPette	Pipette	5000 μ l , manual fixed
H3401-71212118	MicroPette	Pipette	5 μ l , manual fixed
H3401-71212119	MicroPette	Pipette	10 μ l , manual fixed
H3401-71212120	MicroPette	Pipette	20 μ l , manual fixed
H3401-71212121	MicroPette	Pipette	25 μ l , manual fixed
H3401-71212122	MicroPette	Pipette	50 μ l , manual fixed
H3401-71212123	MicroPette	Pipette	100 μ l , manual fixed
H3401-71212124	MicroPette	Pipette	200 μ l , manual fixed
H3401-71212125	MicroPette	Pipette	250 μ l , manual fixed
H3401-71212126	MicroPette	Pipette	500 μ l , manual fixed
H3401-71212127	MicroPette	Pipette	1000 μ l , manual fixed
H3401-71212128	MicroPette	Pipette	2000 μ l , manual fixed
H3401-71212129	MicroPette	Pipette	5000 μ l , manual fixed

Multi-Channel Adjustable Pipette

Introduction

Multi-channel adjustable pipette is used to quantitative transport small volume of low viscosity liquid to multi container in chemistry, biology and medicine industry.



Ordering Information

Part #	Model	Name	Specification
H3401-71111204	TopPette	Pipette	0.5-10 μ l , 8 channel manual adjustable
H3401-71111206	TopPette	Pipette	5-50 μ l , 8 channel manual adjustable
H3401-71111304	TopPette	Pipette	0.5-10 μ l , 12 channel manual adjustable
H3401-71111306	TopPette	Pipette	5-50 μ l , 12 channel manual adjustable
H3401-71111312	TopPette	Pipette	50-300 μ l , 12 channel manual adjustable
H3401-71211204	MicroPette	Pipette	0.5-10 μ l , 8 channel manual adjustable
H3401-71211206	MicroPette	Pipette	5-50 μ l , 8 channel manual adjustable
H3401-71211212	MicroPette	Pipette	50-300 μ l , 8 channel manual adjustable
H3401-71211304	MicroPette	Pipette	0.5-10 μ l , 12 channel manual adjustable
H3401-71211306	MicroPette	Pipette	5-50 μ l , 12 channel manual adjustable
H3401-71211312	MicroPette	Pipette	50-300 μ l , 12 channel manual adjustable

Autoclavable Pipette (Adjustable & Fixed)

Introduction

The MicroPette plus pipettes can be fully autoclaved and withstood steam sterilizes at 121°C, 1 atm for 20 minutes. The pipettes can be autoclaved without special preparations.



Ordering Information

Part #	Model	Name	Specification
H3401-71312118	MicroPette	Pipette	5µl , manual fixed, autoclavable pipette
H3401-71312119	MicroPette	Pipette	10µl, manual fixed, autoclavable pipette
H3401-71312120	MicroPette	Pipette	20µl , manual fixed, autoclavable pipette
H3401-71312121	MicroPette	Pipette	25µl, manual fixed, autoclavable pipette
H3401-71312122	MicroPette	Pipette	50µl, manual fixed, autoclavable pipette
H3401-71312123	MicroPette	Pipette	100µl, manual fixed, autoclavable pipette
H3401-71312124	MicroPette	Pipette	200µl, manual fixed, autoclavable pipette
H3401-71312125	MicroPette	Pipette	250µl, manual fixed, autoclavable pipette
H3401-71312126	MicroPette	Pipette	500µl , manual fixed, autoclavable pipette
H3401-71312127	MicroPette	Pipette	1000µl, manual fixed, autoclavable pipette
H3401-71312128	MicroPette	Pipette	2000µl , manual fixed, autoclavable pipette
H3401-71312129	MicroPette	Pipette	5000µl, manual fixed, autoclavable pipette
H3401-71311101	MicroPette	Pipette	0.1-2.5µl , manual adjustable, autoclavable pipette
H3401-71311104	MicroPette	Pipette	0.5-10µl , manual adjustable, autoclavable pipette
H3401-71311105	MicroPette	Pipette	2-20µl , manual adjustable, autoclavable pipette
H3401-71311106	MicroPette	Pipette	5-50µl , manual adjustable, autoclavable pipette
H3401-71311108	MicroPette	Pipette	10-100µl , manual adjustable, autoclavable pipette
H3401-71311109	MicroPette	Pipette	20-200µl , manual adjustable, autoclavable pipette
H3401-713111011	MicroPette	Pipette	50-200µl , manual adjustable, autoclavable pipette
H3401-713111014	MicroPette	Pipette	100-1000µl , manual adjustable, autoclavable pipette
H3401-713111016	MicroPette	Pipette	200-1000µl , manual adjustable, autoclavable pipette
H3401-713111017	MicroPette	Pipette	1000-1500µl , manual adjustable, autoclavable pipette
H3401-713111204	MicroPette	Pipette	0.5-10µl , 8 channel manual adjustable
H3401-713111206	MicroPette	Pipette	5-50µl , 8 channel manual adjustable
H3401-713111212	MicroPette	Pipette	50-300µl , 8channel manual adjustable
H3401-713111304	MicroPette	Pipette	0.5-10µl , 12channel manual adjustable
H3401-713111306	MicroPette	Pipette	5-50µl , 12channel manual adjustable
H3401-713111312	MicroPette	Pipette	50-300µl , 12channel manual adjustable

Bottle-Top Dispenser

Introduction

Bottle –top dispenser is suitable for the dispensing of low concentrations acid and alkali and salt liquid. It is designed with quick volume setting, piston movement smooth and precision, and excellent chemical resistance.



Ordering Information

Part #	Model	Name	Specification
H3401-73110001	DispensMate	Bottle-Top Dispenser	0.5-5ml
H3401-73110002	DispensMate	Bottle-Top Dispenser	1-10ml
H3401-73110003	DispensMate	Bottle-Top Dispenser	2.5-25ml
H3401-73110004	DispensMate	Bottle-Top Dispenser	5-50ml
H3401-73210001	Top Dispenser	Bottle-Top Dispenser	0.5-5ml
H3401-73210002	Top Dispenser	Bottle-Top Dispenser	1-10ml
H3401-73210003	Top Dispenser	Bottle-Top Dispenser	2.5-25ml
H3401-73210001	Top Dispenser	Bottle-Top Dispenser	5-50ml

Pipette Controller

Introduction

Pipette Controller is suitable for transferring large volume and low viscosity liquids.



Ordering Information

Part #	Model	Name	Specification
H3401-74010001	Levo	Pipette controller	Manual, blue, suitable for 0.1-100ml pipette
H3401-74010002	Levo	Pipette controller	Manual, red, suitable for 0.1-100ml pipette
H3401-74010003	Levo	Pipette controller	Manual, green, suitable for 0.1-100ml pipette
H3401-74010004	Levo	Pipette controller	Manual, yellow, suitable for 0.1-100ml pipette
H3401-74010005	Levo	Pipette controller	Manual, pink, suitable for 0.1-100ml pipette
H3401-74020001	Levo Plus	Pipette controller	Power-driven, suitable for 0.1-100ml pipette

Liquid Handling Device Accessory

Ordering Information

Part #	Model	Name	Specification
H3401-17000069	S40	Bottle Adapter	45/40mm
H3401-17000205		Li battery	Suitable for power driven pipette controller
H3401-17400017	GL32	Bottle Adapter	45/32mm
H3401-17400018	GL38	Bottle Adapter	45/38mm
H3401-17400019	GL25	Bottle Adapter	32/25mm
H3401-17400020	GL28	Bottle Adapter	32/28mm
H3401-17400032		Power supply charger	Suitable for power driven pipette controller
H3401-17400083		Pipette tip adapter	25/50ml
H3401-17900017		Multi-channel pipette loading slot	40ml
H3401-17900018		Pipette tip box	1000µl/1200µl
H3401-17900019		Pipette tip box	200µl/350µl
H3401-17900020		Pipette tip box	10µl
H3401-71000084		Round pipette holder	
H3401-71000085		Pipette holder	
H3401-17000103		Filter	Inlet
H3403-17000171		Universal	0.5-5ml; 1-10ml

		fluid-discharge tube	
H3403-17000172		Universal fluid-discharge tube	2.5-25ml;5-50ml
H3403-17000201		Dry tube	
H3403-17100073		Discharge tube	
H3403-17400021		Filling tube	

Liquid Handling consumable parts

Ordering Information

Part #	Name	Specification
H3401-17400023	Pipette tip	200µl , 1000pcs
H3401-17400024	Pipette tip	10µl , 1000pcs
H3401-17400025	Pipette tip	5000µl , 1000pcs
H3401-17400026S	Pipette tip	10µl , 1000pcs
H3401-17400027	Pipette tip	200µl , 1000pcs
H3401-17400090	Pipette tip	10ml, 250pcs
H3401-17900004	Pipette tip	1000µl , 1000pcs
H3401-17900007	Pipette tip (box)	10µl , 96pcs
H3401-17900009	Pipette tip (box)	200µl , 96pcs
H3401-17900011	Pipette tip (box)	1000µl , 96pcs
H3401-17900024	Adapter tip	0.5ml, 100pcs/package
H3401-17900025	Adapter tip	1.25ml, 100pcs/package
H3401-17900026	Adapter tip	2.5ml, 100pcs/package
H3401-17900027	Adapter tip	5.0ml, 100pcs/package
H3401-17900028	Adapter tip	12.5ml, 100pcs/package
H3401-17900029	Adapter tip	25ml, 50pcs/package
H3401-17900030	Adapter tip	50ml, 25pcs/package
H3401-17900032	Adapter tip	0.5ml, 5pcs/package
H3401-17900033	Adapter tip	1.25ml, 5pcs/package
H3401-17900034	Adapter tip	2.5ml, 5pcs/package
H3401-17900035	Adapter tip	5.0ml, 5pcs/package
H3401-17900036	Adapter tip	12.5ml, 5pcs/package
H3401-17900037	Adapter tip	25ml, 2pcs/package
H3401-17900038	Adapter tip	50ml, 2pcs/package

Gas Generator

Air generator

Introduction

Automatic air generator is a pure and stable pressure air source for gas chromatography. It can meet the requirements of various types of gas chromatography. Automatic air generator is an ideal upgrade product for high-pressure air cylinder.



Ordering Information

Part #	Model	Name	Specification
CA70301001	SPB-3	Automatic air source	Pressure: ≥ 80 Kpa Flow rate : 8L/min Power : 50VA
CA70301003	GCK3302	Automatic air source	Pressure range: 0-0.4 Mpa Flow rate rang : 0-2000ml/min(0.4Mpa) Pressure stability : < 0.003 Mpa

Hydrogen Generator

Introduction

Hydrogen generator can provide stable and clean hydrogen for all kinds of gas chromatography.



Ordering Information

Part #	Model	Name	Specification
CA70101006	SPB-300	Hydrogen generator	Purity: 99.999% Flow rate : 0-300ml/min Pressure: 0-0.4/0-0.6 Mpa optional Pressure stability : < 0.001Mpa
CA70101004	SPH-200	Hydrogen generator	Purity: 99.999% Flow rate : 0-200ml/min Pressure: 0-0.3Mpa Pressure stability : < 0.001Mpa
CA70101009	GCD-1000	Hydrogen generator	Purity: 99.999% Flow rate : 0-1000ml/min Pressure:0-0.4Mpa Pressure stability : < 0.001Mpa
CA70101007	SPH-500A	Hydrogen generator	Purity: 99.999% Flow rate : 0-500ml/min Pressure: 0-0.4Mpa Pressure stability : < 0.001Mpa
CA70101005	SPH-300A	Hydrogen generator	Purity: 99.999% Flow rate : 0-300ml/min Pressure: 0-0.4Mpa Pressure stability : < 0.001Mpa
CA70101008	SPH-500	Hydrogen generator	Purity: 99.999% Flow rate : 0-500ml/min Pressure: 0-0.4/0-0.6 Mpa optional Pressure stability : < 0.001Mpa

Nitrogen Generator

Introduction

Nitrogen generator can provide stable and clean nitrogen for all kinds of gas chromatography.



Ordering Information

Part #	Model	Name	Specification
CA70201001	SPN-300A	Nitrogen generator	Nitrogen purity: O ₂ <3ppm; Dew point -56°C Flow rate : 0-300ml/min Pressure: 0-0.4 Mpa Pressure stability : < 0.003Mpa
CA70201003	SPN-500A	Nitrogen generator	Nitrogen purity: O ₂ <3ppm; Dew point -56°C Flow rate : 0-500ml/min Pressure: 0-0.4 Mpa Pressure stability : < 0.003Mpa
CA70201005	GCN-1000	Nitrogen generator	Nitrogen purity: O ₂ <3ppm; Dew point -56°C Flow rate : 0-1000ml/min Pressure: 0-0.4 Mpa Pressure stability : < 0.003Mpa
CA70201002	SPN-300	Nitrogen generator	Nitrogen purity: O ₂ <3ppm; Dew point -56°C Flow rate : 0-300ml/min Pressure: 0-0.4 Mpa Pressure stability : < 0.003Mpa

Hydrogen-Nitrogen-Air Generator

Introduction

Hydrogen-Nitrogen-Air Generator can provide stable and clean hydrogen , nitrogen and air for all kinds of gas chromatography.



Ordering Information

Part #	Model	Name	Specification
CA70701001	NHA-300	Hydrogen-Nitrogen-Air Generator	Nitrogen purity: O ₂ <3ppm; Dew point -56°C Nitrogen flow rate : 0-300ml/min Nitrogen pressure: 0.4 Mpa

			Hydrogen purity: 99.999% Hydrogen flow rate : 0-300ml/min Hydrogen pressure: 0.4 Mpa Air flow rate : 0-2000ml/min Air pressure: 0.4 Mpa
CA70701002	NHA-500	Hydrogen-Nitrogen-Air Generator	Nitrogen purity: O ₂ <3ppm; Dew point -56°C Nitrogen flow rate : 0-500ml/min Nitrogen pressure: 0.4 Mpa Hydrogen purity: 99.999% Hydrogen flow rate : 0-500ml/min Hydrogen pressure: 0.4 Mpa Air flow rate : 0-2000ml/min Air pressure: 0.4 Mpa
CA70401001	HA-300	Hydrogen- Air Generator	Hydrogen purity: 99.999% Hydrogen flow rate : 0-300ml/min Hydrogen pressure: 0.4 Mpa Air flow rate : 0-2000ml/min Air pressure: 0.4 Mpa

Gas Purifying Equipment

Introduction

Gas purifying equipment is mainly used for a variety of material analysis, elemental analysis, environmental analysis, food analysis and gas chromatography laboratory. It can purify the carrier gas, auxiliary gas and other gas of the process flows and improve the gas purity.



Ordering Information

Part #	Model	Name	Specification
CA70201006	TF-1	Gas Purifier	
CAA0402003	TF-2	Gas Purifier	Withstand pressure: 0.6 Mpa

CAA0402001	ZA1000	Zero Air Generator	Output air relative hydrocarbon concentration (such as methane): <0.1PPM Max. input air relative hydrocarbon concentration (such as methane): <100PPM Max. input air pressure: 0 ~ 0.6Mpa Max. flow rate : 1000ml/min Power supply: 220V±10% 50-60Hz
------------	--------	--------------------	--

Washing and sterilizing equipment

Autoclave

Introduction

The Autoclave is used to sterilize goods quickly and reliable by pressure saturated steam. It is normally applied in medical and health work, scientific and agriculture institutes. It is perfect equipment for sterilizing the medical equipments, dressings, glassware, liquor culture mediums, etc. Autoclave is the required equipment for QS, HACCP certification of food plants, drinking water plants.



Ordering Information

Part #	Model	Name	Specification
H0501-BXM-30R	BXM-30R	Vertical Autoclave	Volume: 30L Power: 2KW Power Supply: 220V±10% 50Hz±2% Max. Working/Design Temp.: 126°C /128°C Max. Working/Design Pressure: 0.14MPa/0.165MPa
H0501-YXQ-LS-50A	YXQ-LS-50A	Vertical Autoclave	Volume: 50L Power: 2.7KW Power Supply: 220V±10% 50Hz±2% Max. Working/Design Temp.: 135°C /138°C Max. Working/Design Pressure: 0.22MPa/0.25MPa

Ultrasonic Cleaner

Introduction

Ultrasonic cleaning is the process to clean goods by ultrasound and appropriate cleaning solvent (sometimes ordinary tap water). Cleaning normally lasts between three and six minutes, but can also exceed 20 minutes, depending on the object to be cleaned.

Ultrasonic cleaners are used to clean many different types of objects in a variety of industries. Such as the cleaning and maintenance of the machinery, electronics, plastics, instrumentation, environmental protection, medicine, packaging, military, aerospace aviation industry, shipbuilding, automotive and other industries of manufacturing, the cleaning of experimental materials, test equipment (straws and utensils), medical devices, medical materials, the degas procedure of HPLC, chromatography, the extract procedure of active ingredients in herbs, tobacco , as well as the cleaning of jewelry, watches, precious metals, glasses .



Ordering Information

Part #	Model	Name	Specification
H0903-SB-5200DT D200W	SB-5200DTD	Ultrasonic Cleaner	Volume: 10L Frequency: 40KHZ Power: 200W
H0903-SB-100D	SB-100D	Ultrasonic Cleaner	Volume: 4.5L

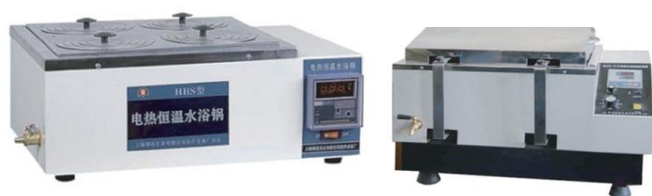
			Frequency: 40KHZ Power: 100W
CAC0403002	AS5150H	Ultrasonic Cleaner	Volume: 6L Frequency: 40KHZ Power: 180W Power adjustment: 50%,100% optional
H0903-SB-120D	SB-120D	Ultrasonic Cleaner	Volume:3L Frequency: 40KHZ Power: 120W

Water Bath / Heating/Drying Equipment

Water bath

Introduction

The water bath boiler is used for precise constant temperature and assistant heating for the procedure of drying, concentration, distillation, impregnation of chemicals or drugs. It is the necessary tool for biological, genetic, virus, fisheries, environmental protection, medicine, health, chemical and biological laboratories and scientific research fields.



Ordering Information

Part #	Model	Name	Specification
H0507-HH.S21-4	HH.S21-4	Electric heating water bath boiler	Dimensions: 310×310×120 mm Power: 0.8KW Temperature and error range: RT+5~100°C ±1°C
H0507-HH.S11-4	HH.S11-4	Electric heating water bath boiler	Dimensions: 620×170×120 mm Power: 1KW Temperature and error range: RT+5~100°C ±1°C

Drying oven

Introduction

Normally, the drying oven is used to dry the sample or provide the required temperature. There are two kinds of drying oven, blowing drying oven and vacuum drying oven. The blowing drying oven can provide the drying condition and ensure the temperature even by blowing hot air from circulation blower.

The vacuum drying oven is commonly used equipment. Since the vacuum pump exhaust the air out of the oven, the atmospheric pressure of the chamber is lower than normal pressure. Thus, oven can provide a cleaning and stable drying condition for the samples.

The drying oven is widely used in a variety of industries, such as chemical industry, electronics, foundry, automotive, food, machinery and other industries. Normally can classified by chamber material (galvanized steel sheet or Stainless steel), display panel (digital or pointer), drying mode (natural convection or blowing circulation).



Ordering Information

Part #	Model	Name	Specification
H0505-9070MBE(101-1BS)	9070MBE(101-1BS)	Blowing Drying oven	Temp. Range: RT+5 ~ 250°C Temp. Resolution: 1°C Temp. Fluctuation: ±1°C(100°C) Temp. Uniformity: ±1°C(100°C) Power: 1100W Working Chamber (mm): 450×400×450 Time Range: 0-999min
H0505-BGZ-70	BGZ-70	Blowing Drying oven	Temp. Range: RT+5 ~ 250°C Temp. Resolution: 0.1°C Temp. Fluctuation: ±0.5°C(100°C) Temp. Uniformity: ±1°C(100°C) Power: 1100W Working Chamber (mm): 450×400×450 Time Range: 0 ~ 99Hr 60min

H0505-BZF-30	BZF-30	Vacuum oven	Power: 900W Temp. Range: RT+2 ~ 250°C Temp. Fluctuation: ±0.5°C Vacuum Degree: 133Pa Volume: 25L Working Chamber (mm): 300×296×275
H0505-GZX-9146M BE	GZX-9146MBE	Blowing Drying oven	Temp. Range: RT+5 ~ 300°C Temp. Resolution: 1°C Temp. Fluctuation: ±1°C(100°C) Temp. Uniformity: ±1°C(100°C) Power: 2100W Working Chamber (mm): 550×490×550
H0505-9030MBE	9030MBE	Drying oven	Temp. Range: RT+5 ~ 250°C Temp. Resolution: 1°C Temp. Fluctuation: ±1°C(100°C) Temp. Uniformity: ±1°C(100°C) Power: 700W Working Chamber (mm): 350×350×350
H3110-101-0AB	101-0AB	Drying oven	Temp. Range: RT+20 ~ 250°C Temp. Fluctuation: ±1°C Working Chamber (mm): 350×350× 350 Power: 1.2kw
H3110-DZ-1AII	DZ-1AII	Vacuum oven	Power: 300W Temp. Range: RT+10-200°C Temp. Fluctuation: ±1% Working Chamber (mm): 300×300× 270 Vacuum degree: < 60

Muffle furnace/Resistance furnace

Introduction

A muffle furnace is a universal device used for high-temperature heating. It is widely used in the following fields:

- (1) Thermal processing, industrial parts processing, cement, building materials industries, thermal processing of small parts.
- (2) Pharmaceutical industry: medicine inspection and medical sample treatment.

(3) Chemical analysis industry: sample treatment of water quality analysis, environmental analysis. It can also be used for petroleum analysis.

(4) Coal analysis: determination of moisture, ash, volatile, ash melting point analysis, ash composition analysis, elemental analysis. It can also be used as a universal ashing furnace.



Ordering Information

Part #	Model	Name	Specification
H2502-SX-2.5-10	SX-2.5-10	Resistance furnace	Rated power: 2.5KW Rated temperature: 1000°C Warming up time: ≤60min Working dimensions: 120×200×80 mm Exterior dimensions: 595×410×467 mm
H1002-SX2-5-12G	SX2-5-12G	Muffle furnace	Chamber dimensions: 300×200×120 mm Chamber volume: 7.2L Design temperature: 1200 °C Working temperature: ≤1050 °C Temperature accuracy: ±1°C Warming rate: ≤15°C/min Heating element: Fe-Cr-Al alloy heating wire (OCr21A16Nb) Exterior dimensions: 590×520×620 mm Power: 5KW
H1002-SX2-4-10G	SX2-4-10G	Muffle furnace	Chamber dimensions: 300×200×120 mm ³ Chamber volume: 7.2L Design temperature: 1000 °C Working temperature: ≤950 °C Temperature accuracy: ±1°C Warming rate: ≤15°C/min Heating element: Fe-Cr-Al alloy heating wire (OCr25Al5) Exterior dimensions: 590×520×620 mm Power: 4KW
H3105-SX-2.5-12	SX-2.5-12	Muffle furnace	Rated power: 2.5KW Temp. range: 950-1200°C Warming up time: 75min

			Power supply: AC220V/11A Working dimensions: 120×200×80 mm Exterior dimensions: 410×595×467 mm
H3103-SX-4-10	SX-4-10	Box type resistance furnace	Rated power: 4KW Temp. range: 750-1000°C Warming up time: 70min Working dimensions: 200×300×120 mm Exterior dimensions: 500×790×527 mm
H3105-SX-2.5-10	SX-2.5-10	Box type resistance furnace	Rated power: 2.5KW Temp. range: 750-1000°C Warming up time: 60min Working dimensions: 120×200×80 mm
E10002001	MH-2800D	Heater	Temperature Display: dual four-digit display Constant temperature range: RT+5 ~200°C The thermostatic stable degrees: ± 0.1° C Thermostat accuracy: ± 0.15° C Upper limit temperature protection: 200°C Temperature deviations protection: set temperature +5°C Timing:1-999 min The incubator Size: 150W x 51H x 95D mm Heating power: 400/220/50 W / V / Hz Dimensions: 240W x 92H x 215D mm
H1705-MH-2810D	MH-2810D	Multi heater	Temperature Display: dual four-digit display Constant temperature range: RT+5~200°C Thermostatic stable degrees: ± 0.1° C Thermostat accuracy: ± 0.15° C Upper limit temperature protection: 200°C Temperature deviations protection: set temperature +5°C Timing :1-999 min The incubator Size: 215W x 51H x 135D mm Heating power: 750/220/50 W / V / Hz Dimensions: 320W x 92H x 270D mm

Other Equipment

Microbiological Device

Introduction



Ordering Information

Part #	Model	Name	Specification
H0504-BSC-250	BSC-250	Constant Temperature & Humidity Incubator	Temp. Range: 0°C-60°C Temp. Resolution: 0.1°C Temp. Fluctuation: ±0.5°C Temp. Uniformity: ±1°C Humidity Range: 50%-90% Humidity Fluctuation: ±5%
H0504-HPX-9272M BE	HPX-9272MBE	Electric Heating Incubator	Temp. Range: RT+5°C-65°C Temp. Resolution: 0.1°C Temp. Fluctuation: ±0.2°C (37°C) Temp. Uniformity: ±0.5°C (37°C)
H0504-BSP-150	BSP-150	Biochemical Incubator	Temp. Range: 0°C-60°C Temp. Resolution: 0.1°C Temp. Fluctuation: ±0.5°C Temp. Uniformity: ±1°C
H0504-MJX-100B-Z	MJX-100B-Z	Mould Incubator	Temp. Range: 5°C-50°C Temp. Resolution: 0.1°C Temp. Fluctuation: ±1°C (37°C) Temp. Uniformity: ±1.5°C (37°C)
H0503-BSC-1000II A2	BSC-1300IIA2 (Compact Type)	Bio Safety Cabinet	Suitable Number of People: Single Cleanliness Class: Class 100 (FED 209E), ≥0.5µm, ≤3.5 grain/L Inflow Air Velocity: 0.60m/s Down Airflow Velocity: 0.38m/s Down Airflow Precision: ±0.015 m/s Pressure Difference Display Range: 0-500pa Noise: ≤65db

			Vibration Half Peak Value: $\leq 5\mu\text{m}$ Illuminance: $\geq 650\text{Lx}$ Ambient Temperature: 10-30°C Relative Humidity: $\leq 70\%$ (25°C) Atmospheric Pressure: 80-105Pa Working Zone: 1100×500×640 mm Exhaust HEPA: 540×450×90 mm
H0504-BG-160	BG-160	Water-jacket Incubator	Temp. Range: RT+2°C-65°C Temp. Resolution: 0.1°C Temp. Fluctuation: $\pm 0.2^\circ\text{C}$ Temp. Uniformity: $\pm 0.5^\circ\text{C}$ Power: 1030W Working Chamber: 550×500×650 mm Overall Size: 700×630×965 mm Shelves: 3pcs
H0502-BJ-1CD	BJ-1CD	Clean Bench	Airflow Direction: Vertical Airflow Working Side: One side Cleanliness Class: Class 100@ $\geq 0.5\mu\text{m}$ (FED209E) Wind Speed: 0.1-0.6m/s (Adjustable) Noise: $\leq 62\text{dB}$ Vibration Half Peak Value: $\leq 3\mu\text{m}$ (X、Y、Z direction) Illuminance: $\geq 300\text{LX}$ Working Zone: 830×700×502 mm
H1401-DW-2	DW-2	Colony counter	Light source: energy saving circular fluorescent side-illumination Counter: CMOS Integrated Circuits Colony counts: pressure sensor counting system Suitable culture dish: microbial culture dish with diameter between 50mm to 155mm Counter capacity: 0 - 999 Dimensions: 350 * 295 * 175 mm
H0907-XSZ-N107	XSZ-N107	Microscope	Dual views/ Camera-three views
H3109-HWS-70B	HWS-70B	Constant Temperature & Humidity Incubator	Temp. Resolution: 0.1°C Temp. Fluctuation: high temperature $\pm 1^\circ\text{C}$, low temperature $\pm 0.5^\circ\text{C}$, Humidity Range: 45%-90% RH Humidity Fluctuation: $\pm 5\%$ -8% RH
H3109-SPX70BIII	SPX70BIII	Biochemical Incubator	Temp. Range: 0°C-65°C Temp. Resolution: 0.1°C Temp. Fluctuation: $\pm 0.5^\circ\text{C}$ Temp. Uniformity: $\pm 1^\circ\text{C}$ Power: 300W Refrigerant: R134a
H3108-CJ-1D	CJ-1D	Clean Bench	Cleanliness Class: Class 100@ $\geq 0.5\mu\text{m}$ (FED209E) Wind Speed: 0.3-0.6m/s (Adjustable) Noise: $\leq 62\text{dB}$ Vibration Half Peak Value: $\leq 3\mu\text{m}$ (X、Y、Z direction) $\leq 4\mu\text{m}$ Illuminance: $\geq 300\text{LX}$ Fluorescent / UV lamp specifications and quantity: 18W×① 20W×② 30W×① 30W×① 18W×① 20W×② Power: 0.4KW

			High efficiency filter specifications and quantity: 820×600×50×① Working Zone: 880×660×500 mm Working Side: One side(single person)
--	--	--	---

Other Equipment

Pressure Blowing Concentrator

Introduction



Ordering Information

Part #	Model	Name	Specification
H1702-MTN-2800W	MTN-2800W	MNT serial pressure blowing concentrator	Temp. range: ambient+5°C~100°C Temp. accuracy: ±0.1°C Power-off temp.: 110°C Deviation temp.: set temp.+5°C Timer range: 10min~99hr59min Heated zone: 150WX70HX95L mm Power: 350W
H1702-MTN-2800D (24)	MTN-2800D	MNT serial pressure blowing concentrator	Temp. range: ambient+5°C~180°C Temp. accuracy: 0.1°C Power-off temp. : 185°C Deviation temp.: set temp.+5°C Timer range: 10min~99h59min Heated zone: 150WX70HX95L mm Hole number: 24 Power: 350W
H1702-MIN-2800D (12)	MTN-2800D	MNT serial pressure blowing concentrator	Temp. range: ambient+5°C~180°C Temp. accuracy: 0.1°C Power-off temp. : 185°C Deviation temp.: set temp.+5°C Timer range: 10min~99h59min

			Heated zone: 150WX70HX95L mm Hole number: 12 Power: 350W
--	--	--	--

Solvent Filtration Apparatus

Ordering Information

Part #	Model	Name	Specification
H1703-AL-04	AP-9925N+FB-10T		Filter cup (300ml), the intermediate filter head, flask (1000ml), and aluminum clip.
H1703-AL-03	AP-9901S+FB-10T		Filter cup (300ml), the intermediate filter head, flask (1000ml), and aluminum clip.
H1703-AL-02	AP-9925N+ZFB-10		Filter cup, filter head, cup bottle, and aluminum clip , tray.
H1703-AL-01	AP-01P+FB-10T		Filter cup (300ml), the intermediate filter head, flask (1000ml), and aluminum clip.
CAC0403001	P-01pump+FP01 bottle		Filter cup, the intermediate filter head, flask, and aluminum clip.

Solvent Filtration Apparatus Accessory

Ordering Information

Part #	Model	Name	Specification
H1703-FB-05T	FB-05T	Solvent filtering bottle	500ml

Solid-Phase Extraction



Ordering Information

Part #	Model	Name	Specification
H1701-ASE-12	ASE-12	Solid phase extraction	Pressure resistance: better than 80kpa Number of samples can be processed simultaneously: 12 Test tube holder size: $\Phi 11$, $\Phi 13$, $\Phi 15$ Test tube holder length: 105mm and below

Kjeldahl Nitrogen Analyzer

Introduction



Ordering Information

Part #	Model	Name	Specification
H1801-SPD80D	SPD80D	Kjeldahl Nitrogen Auto Analyzer	Minimum titration accuracy: 1ul/step
H1801-SPD60	SPD60	Kjeldahl Nitrogen Auto Analyzer	Measurement range (mgN) : 0.1~200 Sample volume (g,ml) : 5 , 15 Distillation rate (min/sample) : 3~7

Abbe Refractometer/ Polarimeter

Introduction



Ordering Information

Part #	Model	Name	Specification
H1501-WZZ-3	WZZ-3	Automatic Polarimeter	Measurement range: $-45^{\circ} \sim +45^{\circ}$; $-120^{\circ} Z \sim +120^{\circ} Z$ (2SS) Minimum indicating value: 0.001° ; $0.001^{\circ} Z$ (2SS) Minimum transmittance : 1%
H1501-WAY-2W	WAY-2W	Abbe refractometer	Refractive index (nD): 1.3000 ~ 1.7000 Brix 0 ~ 95.0% Resolution refractive index(nD): 0.001 Brix 0.1% Accuracy refractive index (nD): ± 0.0003 Brix $\pm 0.1\%$ Temp. range ($^{\circ}C$): 10 ~ 50
H1502-WAY-2S	WAY-2S	Abbe refractometer	Refractive index (nD): 1.3000 ~ 1.7000 Brix 0 ~ 95.0% Resolution refractive index: (nD) 0.001 Brix 0.1% Accuracy refractive index (nD): ± 0.0002 Brix $\pm 0.1\%$ Temp. range ($^{\circ}C$): 0 ~ 50

Conductivity meter / pH meter

Introduction



Ordering Information

Part #	Model	Name	Specification
H2703-DDSJ-318	DDSJ-318	Conductivity meter	Instrument Level: 0.5 Conductivity: $0.055\mu S / cm \sim 199.9mS / cm$ Resistivity: $5.00\Omega \cdot cm \sim 18.25M\Omega \cdot cm$ TDS: $0.000 mg / L \sim 100g / L$

			Salinity: (0.00 to 8.00)% Temperature: (-5.0 ~ 135.0) °C
H2703-DDSJ-308A	DDSJ-308A	Conductivity meter	Instrument Level: 1.0 Conductivity: 0.000μS / cm ~ 199.9mS / cm TDS: 0.000 mg / L ~ 99.9g / L Salinity: (0.00 to 8.00)% Temperature: (-5.0 ~ 105.0) °C
H2703-DDS-307A	DDS-307A	Conductivity meter	Instrument Level: 1.0 Conductivity: 0.00μS / cm ~ 100mS / cm TDS: 0.000 mg / L ~ 1000mg / L Temperature: (0 ~ 60.0) °C
H2703-DDS-307	DDS-307	Conductivity meter	Instrument Level: 1.0 Conductivity: 0.00μS / cm ~ 100mS / cm Stability: (±0.33%FS)/3h
H2703-DDS-11C	DDS-11C	Conductivity meter	Measurement range: Conductivity: 0 ~ 1×10 ⁵ μS / cm Deviation: ±1.0%FS Stability: (±1.0%FS)/3h
H2704-DDS-11A	DDS-11A	Conductivity meter	Measurement range: Conductivity: 0 ~ 20mS / cm
H2702-PHSJ-5	PHSJ-5	pH meter	Instrument Level: 0.001 pH : (-2.000 ~ 18.000) pH mV : (-1999.99 ~ 1999.99) mV Temperature : (-5.0 ~ 105.0) °C
H2702-PHS-3E	PHS-3E	pH meter	Instrument Level: 0.01 pH : (-2.000 ~ 18.000) pH Temperature : (0 ~ 99.9) °C
H2702-PHS-3C	PHS-3C	pH meter	Instrument Level: 0.01 pH : (0.00 ~ 14.00) pH Temperature compensation: manual(0.0 ~ 60.0) °C
H2702-PHG-21D-1	PHG-21D-1	pH meter	pH : (0.00 ~ 14.00) pH Temperature: (-10.0 ~ 120.0) °C
H2702-PHB-4	PHB-4	pH meter	Instrument Level: 0.1 pH : (0.00 ~ 14.00) pH

Portable On-site Sample Pretreatment Module

Portable Food Safety On-site Sample Pretreatment Module

Introduction

Portable sample preparation modules for food safety on-site analysis, which include 12 kinds of pre-processing module and 2 kinds of package, are the sample pretreatment modules of C30 portable spectrometer. All modules are designed with standard size. The user can choose 2 modules and put them into one of the module package according to the sample pretreatment requirements. All modules can support the use of C30. The modules are suitable for commercial industry, agricultural industry, quality control industry, health monitoring industry, import and export inspection and quarantine centers, food and drug regulatory industry. They can also be used in food production enterprises, wholesale market of farm and sideline products, agricultural production base, farmers markets, supermarkets, hotels, restaurants, canteens and so on.

Crushing module

Introduction

The crushing module is the pretreatment module for the smash procedure of solid, semi-solid food samples. It includes the crusher, all sampling tools of semi-solid sample and can be used for on-site sample treatment. The crushing module greatly improves the efficiency and accuracy of sample extraction.



Ordering Information

Part #	Name	Function
P221001-00	Crushing module	Suitable for smash procedure of solid, semi-solid food samples

Measurement module

Introduction

The measurement module is mainly for the weighting of solid sample and the transferring of liquid sample. It includes pocket balance and the universal measurement tools for all test items. This module is also equipped with consumable parts for sample pretreatment.



Ordering Information

Part #	Name	Function
P221002-00	Measurement module	Suitable for sample weighting and transferring

Ultrasonic module

Introduction

The ultrasonic module which includes portable ultrasonic cleaner is designed for the ultrasonic exaction of test samples. The ultrasonic module greatly improves the efficiency of sample extraction



Ordering Information

Part #	Name	Function
P222001-00	Ultrasonic module	Suitable for ultrasonic sample extraction

Temperature control module

Introduction

The temperature control module includes a temperature controlled heater. The digital temperature and time display function make the heating procedure more accurate. It is mainly used for sample heating process, distillation, as well as providing temperature for

liquid sample. The build-in air pump can be used for the application of sodium sulphide (MSG) test.



Ordering Information

Part #	Name	Function
P222002-00	Temperature control module	Suitable for heating extraction, distillation, reaction heating of liquid sample

Distillation module

Introduction

The distillation module is mini glass distillation components, mainly for distillation experiments. It is quite convenient.



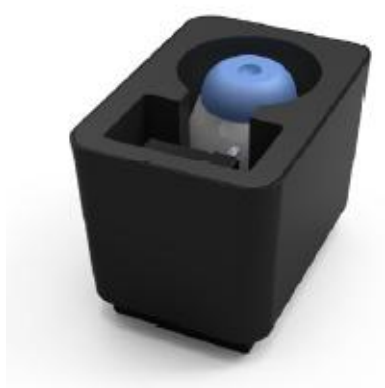
Ordering Information

Part #	Name	Function
P222003-00	Distillation module	Suitable for distillation extraction

Vortex module

Introduction

The vortex module includes a portable vortex mixer, mainly for sample extraction or reagent mixture. It is portable and safe for transportation.



Ordering Information

Part #	Name	Function
P222004-00	Vortex module	Suitable for vortex mixture

Extraction module

Introduction

The extraction module includes a removable modular iron support units and extraction glassware for sample liquid extraction experiments.



Ordering Information

Part #	Name	Function
P222005-00	Extraction module	Suitable for sample exaction

Centrifuge module

Introduction

The centrifuge module includes a portable centrifuge and centrifuge tubes, mainly for the extraction of centrifugal liquid sample. It is portable and safe for transportation.



Ordering Information

Part #	Name	Function
P223001-00	Centrifuge module	Suitable for centrifugal treatment

Arsenic hydride measurement module

Introduction

Arsenic hydride measurement module includes the special glassware for inorganic arsenic determination. It is a dedicated module for the determination of inorganic arsenic in food.



Ordering Information

Part #	Name	Function
P224001-00	Arsenic hydride measurement module	Suitable for inorganic arsenic determination

Hydrogen sulfide measurement module

Introduction

Hydrogen sulfide measurement module includes the special glassware for hydrogen sulfide determination. It can be used with heating module. The gas flow technology enables sodium sulfide detection in MSG on-site.



Ordering Information

Part #	Name	Function
P224002-00	Hydrogen sulfide measurement module	Suitable for hydrogen sulfide determination in MSG

Titration module

Introduction

Titration module includes magnetic stirrer and a semi-automatic titration device. The titration and stirring procedure can be carried out at the same time. The use of digital pipetting technique can precisely test the sample and improve the accuracy.



Ordering Information

Part #	Name	Function
P225001-00	Titration module	Suitable for titration determination

Honey moisture analysis module

Introduction

Honey moisture analysis module includes thermometer and hand-held refractometer . It can be used for the measurement of food temperature and honey moisture. It is a portable module.



Ordering Information

Part #	Name	Function
P225002-00	Honey moisture analysis module	Suitable for food temperature and honey moisture determination

Module Package

Introduction

There are 2 types of Module package (8X and 4X). They unique bottom slot design can make sure that the modules selected by the user according to the determination requirements can be flexible and perfectly assembled in the package. The module package has waterproof, rain, vibration-proof functions , which can meet the needs of portable, automotive, airdrop and other on-site test fields.



Ordering Information

Part #	Name	Function
P211001-00	Module package (8X)	Suitable for assembling of modules
P211002-00	Module package (4X)	Suitable for assembling of modules

Portable On-site Sample Pretreatment Module

Portable Water Analysis On-site Sample Pretreatment Module

Introduction

Portable sample preparation modules for on-site water analysis, which include 8 kinds of pre-processing module and 2 kinds of module package, are the sample pretreatment modules of C30 portable spectrometer. Portable water analysis on-site test sample preparation module shares the extraction module, arsenic hydride module, titration module and two kinds of module package with the **Portable food safety on-site test sample preparation module** (Please check the product descriptions from portable food safety on-site test sample

preparation module). All modules are designed with standard size. The user can choose 2 modules and put them in to one of the module package according to the sample pretreatment requirements. All modules support the use of C30. The modules are suitable for detection and monitoring of drinking water, surface water, groundwater, waste water and irrigation water.

Conductivity measurement module

Introduction

This module is mainly used for the determination of total dissolved solids in water. It includes electrical conductivity meter, membrane electrode, calibration solution and other components. All the components will be protected with foam before putting into the module package.



Ordering Information

Part #	Name	Function
P232001-00	Conductivity measurement module	Suitable for conductivity measurement

Water quality analysis module

Introduction

The Water quality analysis module is designed for the convenient and safety of the operation, which includes syringe type filters, glass rod, gloves and the others. All the components will be protected with foam before putting into the module package. It is portable and safe for transportation.



Ordering Information

Part #	Name	Function
P231001-00	Water quality analysis module	

Temperature control module

Introduction

Temperature controls module, which mainly includes the heater, is used for the heating processing of the water quality analysis. All the components will be protected with foam before putting into the module package. It is portable and safe for transportation.



Ordering Information

Part #	Name	Function
P231002-00	Temperature control module	Suitable for the heating process

Optical fiber module

Introduction

This module is design for water quality analysis. It includes immersion optical fiber, probe holder, probe unit and other components. All the components will be protected with foam before putting into the module package. It is portable and safe for transportation.



Ordering Information

Part #	Name	Function
P232003-00	Optical fiber module	Suitable for the items that need fiber probe

Portable Soil & Fertilizer Analysis On-site Sample Pretreatment

Module

Introduction

Portable sample preparation modules for on-site soil and fertilizer analysis, which include 13 kinds of pre-processing module and 2 kinds of module package, are the sample pretreatment modules of C30 portable spectrometer.

Portable soil & fertilizer on-site test sample preparation module shares the crushing module, distillation module, titration module and two kinds of module package with the **Portable food safety on-site sample pretreatment module**

(Please check the product descriptions from portable food safety on-site sample pretreatment module). All modules are designed with standard size.

The user can choose 2 modules and put them in to one of the module package according to the sample pretreatment requirements. All modules support the use of C30. The modules are suitable for soil and fertilizer analysis in the industries of commercial industry, agricultural industry, quality control industry.

Soil sampling module

Introduction

Soil sampling module, which is the accessory of C30 portable spectrometer, is the pretreatment module of soil & fertilizer analysis. It is used for soil sample collection. This module includes a whole set of portable soil sampling equipments. Module core is made by shockproof material, which can assure that all the containers will not contact each

other, to ensure safety. All the components will be put into the special module package, which is portable and safe for transportation.



Ordering Information

Part #	Name	Function
P242001-00	Soil sampling module	Suitable for soil sampling procedure

Universal module for soil and fertilizer analysis

Introduction

Universal module for soil and fertilizer analysis, which is the accessory of C30 portable spectrometer, is the pretreatment module of soil & fertilizer analysis. This module includes several types of sample containers, which can be used with the other modules to finish all the detection. Module core is made by shockproof material, which can assure that all the containers will not contact each other. The distribution of containers in the module package is reasonable and saving space.



Ordering Information

Part #	Name	Function
P241001-00	Universal module for soil and fertilizer analysis	Universal module

Available boron analysis module

Introduction

Available boron analysis module, which is the accessory of C30 portable spectrometer, is the pretreatment module of soil & fertilizer analysis. It is used for the pretreatment of available boron detection. This module includes all pretreatment equipments (e.g. quartz extraction equipment) for available boron detection. The independent packaging design of quartz extracting equipment can assure that the quartz equipment is easy to be identified from the other equipments. The configuration of test tube holder makes the sample detection procedure more convenient. All the components will be put into the special module package, which is portable and safe for transportation.



Ordering Information

Part #	Name	Function
P241002-00	Available boron analysis module	Suitable for the detection of available boron

Basic module

Introduction

Basic module, which is the accessory of C30 portable spectrometer, is the pretreatment module of soil & fertilizer analysis. It is used for the weighing and pretreatment procedure.

This module includes balance, some of sample pretreatment equipments and consumable parts. It almost contains all the universal equipments for all analysis items. Module core is made by shockproof material, which can assure that all the containers will not contact each other. The distribution of containers in the module package is reasonable and saving space.



Ordering Information

Part #	Name	Function
P241003-00	Basic module	Basic equipments for analysis

Stirring module

Introduction

Stirring module, which is the accessory of C30 portable spectrometer, is the pretreatment module of soil & fertilizer analysis. It is used for the stirring and titration. This module includes magnetic stirrer, which can be used for the sampler stirring and also can be used along with the equipments in basic module for the titration function. Module core is made by shockproof material, which can assure that all the containers will not contact each other. All the components will be put into the special module box, which is portable and safe for transportation.



Ordering Information

Part #	Name	Function
P241004-00	Stirring module	Suitable for stirring

Filtration module

Introduction

Filtration module, which is the accessory of C30 portable spectrometer, is the

pretreatment module of soil & fertilizer analysis. It is used for sample filtration. This module includes a variety of filter vessels, which can make the possibility of simultaneously filtration for multi-samples or different items. Module core is made by shockproof material, which can assure that all the containers will not contact each other. All the components will be put into the special module package, which is portable and safe for transportation.



Ordering Information

Part #	Name	Function
P241005-00	Filtration module	Suitable for sample filtration

Extraction module

Introduction

Extraction module, which is the accessory of C30 portable spectrometer, is the pretreatment module of soil & fertilizer analysis. It is used for the sample extraction in ambient temperature. This module includes a variety of extraction vessels, which can make the possibility of simultaneously extraction for multi-samples or different items in ambient temperature. Module core is made by shockproof material, which can assure that all the containers will not contact each other. All the components will be put into the

special module package, which is portable and safe for transportation.



Ordering Information

Part #	Name	Function
P241006-00	Extraction module	Suitable for extraction in ambient temp.

Heating extraction module

Introduction

Heating extraction module, which is the accessory of C30 portable spectrometer, is the pretreatment module of soil & fertilizer analysis. It is used for the sample heating extraction. This module includes a variety of heating extraction vessels, which can make the possibility of simultaneously heating extraction for multi-samples or different items.

Module core is made by shockproof material, which can assure that all the containers will not contact each other. All the components will be put into the special module package, which is portable and safe for transportation.



Ordering Information

Part #	Name	Function
P241007-00	Heating extraction module	Suitable for sample heating extraction

Φ16 test tube module

Introduction

Φ16 test tube module, which is the accessory of C30 portable spectrometer, is the pretreatment module of soil & fertilizer analysis. It is used for the sample constant volume and measurement procedures. It includes many Φ16 test tubes, which can make the possibility of simultaneously measurement for multi-samples or different items. Module core is made by shockproof material, which can assure that all the containers will not contact each other. All the components will be put into the special module package, which is portable and safe for transportation.



Ordering Information

Part #	Name	Function
P241008-00	Φ16 test tube module	Φ16 test tube

Φ25 test tube module

Introduction

Φ25 test tube module, which is the accessory of C30 portable spectrometer, is the pretreatment module of soil & fertilizer analysis. It is used for the sample constant volume and measurement procedures. It includes many Φ25 test tubes, which can make the possibility of simultaneously measurement for multi-samples or different analysis. Module core is made by shockproof material, which can assure that all the containers will not contact each other. All the components will be put into the special module package, which is portable and safe for transportation.



Ordering Information

Part #	Name	Function
P241009-00	Φ25 test tube module	Φ25 test tube

Constant volume module

Introduction

Constant volume module, which is the accessory of C30 portable spectrometer, is the

pretreatment module of soil & fertilizer analysis. It is used for the sample constant volume procedure. It includes many constant volumes vessels, which can make the possibility of simultaneously constant volume procedure for multi-samples or different analysis. Module core is made by shockproof material, which can assure that all the containers will not contact each other. All the components will be put into the special module package, which is portable and safe for transportation.



Ordering Information

Part #	Name	Function
P241010-00	Constant volume module	Constant volume for solution

Condensation module

Introduction

Condensation module, which is the accessory of C30 portable spectrometer, is the pretreatment module of soil & fertilizer analysis. It includes many condensation vessels, which can be used along with the heating extraction module and make the possibility of simultaneously condensation procedure for multi-samples or different analysis. Module core is made by shockproof material, which can assure that all the containers will not contact each other. All the components will be put into the special module package, which

is portable and safe for transportation.



Ordering Information

Part #	Name	Function
P241011-00	Condensation module	Suitable for condensation in distillation procedure

Constant temperature module

Introduction

Constant temperature module, which is the accessory of C30 portable spectrometer, is the pretreatment module of soil & fertilizer analysis. It includes multi-function heater which can be used for the fast and high efficient heating of different vessels. The digital display for temperature and time make the heating procedure more precisely. All the components will be put into the special module package, which is portable and safe for transportation.



Ordering Information

Part #	Name	Function
P241012-00	Constant temperature module	Suitable for heating sample

Portable Colloidal Gold Product On-site Sample Pretreatment Module

Introduction

Portable colloidal gold product on-site sample pretreatment modules, which include 2 kinds of pre-processing module and 2 kinds of module package, are the sample pretreatment modules of TR3 portable colloidal detector. This module shares two kinds of module box with the **Portable food safety on-site sample preparation module** (Please check the product descriptions from portable food safety on-site sample preparation module). All modules equipped with operation instructions and brief process flow of the sample detection. The modules are widely used in quality inspection, industry and commerce, Inspection and Quarantine, CDC, the Food and Drug fields, livestock and related enterprises.

Pretreatment module

Introduction

The pretreatment module includes crush machine, centrifuge, vortex, pocket balance and a variety of small size devices. All the equipments are portable. It can be used for the crushing, weighing, vortex mixing and centrifugation of live animal tissue, cereal samples, feed, edible oil.



Ordering Information

Part #	Name	Function
P225006-00	Pretreatment module	Suitable for sample crushing and centrifugation

Heating and dry module

Introduction

Heating and dry module consists of centrifuge tubes, beaker, hairdryer, multi centrifuge tube racks, heating magnetic stirrer, hairdryer bracket, cylinder brushes, etc. All the devices are portable and easy to carry. It can be used for boiling of live animal tissues, the dry and concentration of grain, feed, edible oil.



Ordering Information

Part #	Name	Function
P225007-00	Heating and dry module	Suitable for heating and dry procedure

On-site Fast Detection Guide

Food

Introduction

The On-site fast detection guide (food) is the operation instruction guide for food test. It includes the operation guide.

Ordering Information

Part #	Name
P212001-01-00	Nitrite in food
P212001-02-00	Sulfur dioxide in food
P212001-03-00	Oxymethylene in food
P212001-04-00	Cyanide in food
P212001-05-00	Peroxide value of oil
P212001-06-00	Hydrogen peroxide in food
P212001-07-00	Inorganic arsenic in food
P212001-08-00	Nitrate in food
P212001-09-00	Protein in milk
P212001-10-00	Pesticide residues
P212001-11-00	Volatile basic nitrogen in meat

P212001-12-00	Tea polyphenol in tea
P212001-13-00	Sodium sulfide in monosodium
P212001-14-00	Sodium thiocyanate (sodium bisulfide) in milk
P212001-15-00	Peroxide value in solid food
P212001-16-00	Salt Iodine in salt
P212001-17-00	Saccharose in honey
P212001-18-00	Sodium formaldehyde sulfoxylate in food
P212001-19-00	Benzoyl Peroxide toluene aldehyde in flour
P212001-20-00	Amino acid nitrogen in soy sauce
P212001-21-00	Methanol in alcoholic drink
P212001-22-00	Total acidity in vinegar
P212001-23-00	Dissociative mineral acid in vinegar
P212001-24-00	pH in food
P212001-25-00	Food temperature
P212001-26-00	Fusel oil in alcoholic drink
P212001-27-0	Histamine in aquatic product
P212001-28-00	Saccharin sodium in beverage
P212001-29-00	Fructose and glucose in honey
P212001-30-00	Adulterated sesame oil
P212001-31-00	Proline in honey
P212001-32-00	Acidity of honey
P212001-33-00	Malonaldehyde in lard

P212001-34-00	Acid value in edible oil
P212001-35-00	Sodium glutamate in monosodium glutamate
P212001-36-00	Trimethylamine nitrogen in ham
P212001-37-00	Sorbic acid in food
P212001-38-00	Urea in milk
P212001-39-00	Urea in edible fungus
P212001-40-00	Bromated in food
P212001-41-0	Water soluble Borax in food
P212001-42-00	Ethanol in alcoholic drink
P212001-43-00	Heavy metals in plastic wrappage
P212001-44-00	Moisture of honey
P212001-45-00	Hydroxymethylfurfural in honey
P212001-46-00	Amylase in honey
P212001-47-00	Total acidity in soy sauce
P212001-48-00	Freshness of rice
P212001-49-00	Adulterated agaric
P212001-50-00	Total flavones in honey
P212001-51-00	Anion detergent in beer
P212001-52-00	Potassium hypermanganate in package

Water

Introduction

The On-site fast detection guide (water) is the operation instruction guide for

water analysis. It includes the operation guide.

Ordering Information

Part #	Name
P212002-00-00	Total hardness
P212002-02-00	Chloride
P212002-03-00	Turbidimetry Sulfate
P212002-04-00	Oxygen consumption
P212002-05-00	Extraction method for volatile phenols
P212002-06-00	Anionic detergent
P212002-07-00	Aluminum
P212002-08-00	Total Iron
P212002-09-00	Total manganese
P212002-10-00	Copper
P212002-11-00	Zinc
P212002-12-00	Nitrite nitrogen solid
P212002-13-00	Nitrite ammonia
P212002-14-00	Nesster's reagent of ammonia
P212002-15-00	Free chlorine
P212002-16-00	Chloramine
P212002-17-00	Ozone
P212002-18-00	Chlorine dioxide
P212002-19-00	Arsenic

P212002-20-00	Fluoride
P212002-21-00	Mercury
P212002-22-00	Silicic acid
P212002-23-00	Urea
P212002-24-00	Hexavalent chromium
P212002-25-00	Cyanide
P212002-26-00	Total phosphorus
P212002-27-00	Lead
P212002-28-00	Cadmium
P212002-29-00	COD cr high concentration
P212002-30-00	COD cr low concentration
P212002-31-00	Total Cyanide
P212002-32-00	Soluble phosphate
P212002-33-00	Total chlorine
P212002-34-00	Sulfide
P212002-35-00	Sulfate
P212002-36-00	Volatile phenols measurement by direct method
P212002-37-00	Aniline
P212002-38-00	Turbidity
P212002-39-00	Formaldehyde
P212002-40-00	Total chromium
P212002-41-00	Total soluble iron

P212002-42-00	Ferrous
P212002-43-00	Alkaline manganese method COD
P212002-44-00	Oxidation method of ammonia
P212002-45-00	Nickel
P212002-46-00	Nitrite nitrogen
P212002-47-00	Free chlorine solid
P212002-48-00	Manganese low concentration
P212002-49-00	Soluble total solid
P212002-50-00	Visible matter
P212002-51-00	Chroma
P212002-52-00	pH measurement
P212002-53-02	smell detection
P212002-54-00	Dissolved oxygen measurement
P212002-55-00	Dissolved hydrazine
P212002-56-00	Soluble copper measurement

Soil & Fertilizer

Introduction

The On-site fast detection guide (soil & fertilizer) is the operation instruction guide for soil and fertilizer analysis. It includes the operation guide.

Ordering Information

Part #	Name
--------	------

P212003-00-00	Soil texture
P212003-02-00	Soil pH value
P212003-03-00	Soil collection , sample preparation and moisture measurement
P212003-04-00	Available potassium, Available phosphorus, ammonium nitrogen in soil
P212003-05-00	Slowly available potassium in soil
P212003-06-00	Nitrate Nitrogen in soil
P212003-07-00	Organic matter in soil
P212003-08-00	Available boron in soil
P212003-09-00	Lime requirement in soil
P212003-10-00	Hydrolysable N in soil
P212003-11-00	Fertilizer moisture
P212003-12-00	Total nitrogen in fertilizer
P212003-13-00	Total nitrogen in organic fertilizer
P212003-14-00	Organic matter in fertilizer
P212003-15-00	Total potassium in fertilizer
P212003-16-00	Total potassium in organic fertilizer
P212003-17-00	Available phosphorus in fertilizer
P212003-18-00	Available phosphorus in organic fertilizer
P212003-19-00	Chloridion in fertilizer
P212003-20-00	Free acid in fertilizer
P212003-21-00	Nitrate Nitrogen in fertilizer

P212003-22-00	Urea nitrogen
P212003-23-00	Amidonitrogen in fertilizer